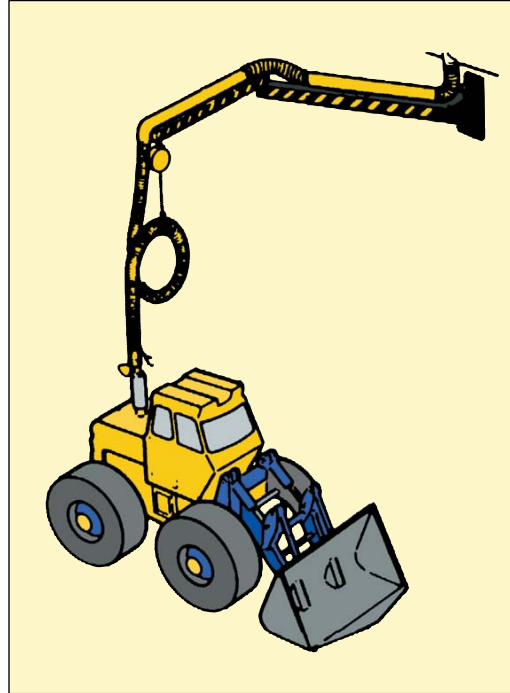


# Swing-arm Hose Dropper

Expand your working area with a Swing-arm retractable Hose Dropper.

The swing-arm retractable hose dropper is the perfect solution for workshops that require flexibility.

The swing-arm allows you to position the retractable Hose Drop on any side of the vehicle. It's the best exhaust extraction system for large off-road and mining vehicles. The swing-arm will reach as far as 8 m/26.2 ft into the service bay and pass over the top of heavy equipment with ease.



## Here are a few of the features that you can benefit from:

- Air volume for high output engines up to 2040 m<sup>3</sup>/h/1200 CFM
- Ballbearing movement
- Double articulated swing-arm
- Swing-arm reaches out to 8 m/26.2 ft
- Built-in tool holder for power tools or welding equipment
- Easy to position and attach to exhaust tailpipe.
- Folds flat to wall or column when not in use.
- Works in areas where overhead cranes operate

## TECHNICAL DATA

### Swing-arm Hose Dropper – FEB

(complete with 5 m/16 ft hose, balancer, suspension belt and swing-arm)

Prod. no.	Arm length	Hose diameter	Weight	Prod. no.	Arm length	Hose diameter	Weight
FEB-4.5-100	4.5 m/14.8 ft	100 mm/4"	56.4 kg/124 lbs	FEB-6-100	6.0 m/19.7 ft	100 mm/4"	83.2 kg/183 lbs
FEB-4.5-125	4.5 m/14.8 ft	125 mm/5"	57.4 kg/126 lbs	FEB-6-125	6.0 m/19.7 ft	125 mm/5"	84.2 kg/185 lbs
FEB-4.5-150	4.5 m/14.8 ft	150 mm/6"	58.4 kg/128 lbs	FEB-6-150	6.0 m/19.7 ft	150 mm/6"	85.2 kg/187 lbs

Prod. no.	Arm length	Hose diameter	Weight
FEB-8-100	8.0 m/26.2 ft	100 mm/4"	112.4 kg/247 lbs
FEB-8-125	8.0 m/26.2 ft	125 mm/5"	113.4 kg/249 lbs
FEB-8-150	8.0 m/26.2 ft	150 mm/6"	114.4 kg/252 lbs

PlymoVent reserves the right to make design and technical changes.

## Case Study – Bigfoot Motorcycles, Germany

### Customer

BIGFOOT Motorcycles  
Heideweg 7, Bad Honnef, Germany

### Problem

Motorcycle dealerships are required to provide service and performance tests on the products that they sell. When repairs and tuning are performed, the motorcycles emit high volumes of exhaust into small workshop areas. Bigfoot had eight motorcycle service bays with the ability to perform service and Dyno tests, which require engines running, in many cases at high RPM. The result was high carbon monoxide levels which travelled throughout the facility.

### Solution and how we did it

After reviewing the work pattern of the repair shop, PlymoVent engineered a solution. The customer explained that he had two service technicians that worked in the eight bays and that only two motor cycles ran at the same time. The solution was to install two PlymoVent swing-arms, both 3 m/9.8 ft long which were able to reach into four working bays each. This allowed the service technician to easily attach any motor-cycle in his work area and even work on motor cycles with dual exhaust by attaching a Y adapter. The two swing-arms were connected to a central fan, where the emission was exhausted out of the shop through the roof.



### PlymoVent equipment supplied:

- 2 FEB-3-125 – Swing-arm Hose Dropper
- 2 EG-125 – Exhaust Hose
- 2 REC-125-160 – Rubber nozzle
- 2 YS-100 – Y adapter
- 1 FS-4700 – Exhaust fan

## Case Study – Boströms Traktor & Maskin, Sweden

### Customer

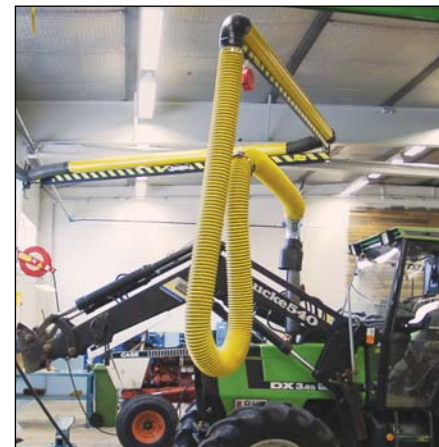
Boströms Traktor & Maskin AB,  
Alviksvägen 1, Umeå, Sweden

### Problem

Construction equipment dealerships usually have large work areas to service and fit out, bucket loaders, bulldozer and earth moving equipment. Construction equipment dealers like Boströms Traktor & Maskin deal with high output diesel engines that are not required to meet pollution control standards. The raw diesel exhaust in high concentration has long contaminated their working environment.

### Solution and how we did it

After reviewing the work pattern and equipment inventory of the work shop, PlymoVent engineered a solution. The customer explained that he had high vehicles, a low ceiling and a lifting crane that moved the full length of his work shop. The solution was to install 2 PlymoVent Swing-arms which reached 8 m/26.2 ft into the working area, allowing the hose and the nozzle to drop down onto the vehicles' vertical exhaust stack and operate under the bridge crane without getting in the way. The two swing-arms were connected to a central fan where the emissions were exhausted out of the shop to the atmosphere.



### PlymoVent equipment supplied:

- 2 FEB-8-150 – Swing-arm Hose Dropper
- 2 EH-150-7.5 – Exhaust hose
- 2 RECD-150-160 – Rubber nozzle
- 1 FS-4700 – Exhaust fan